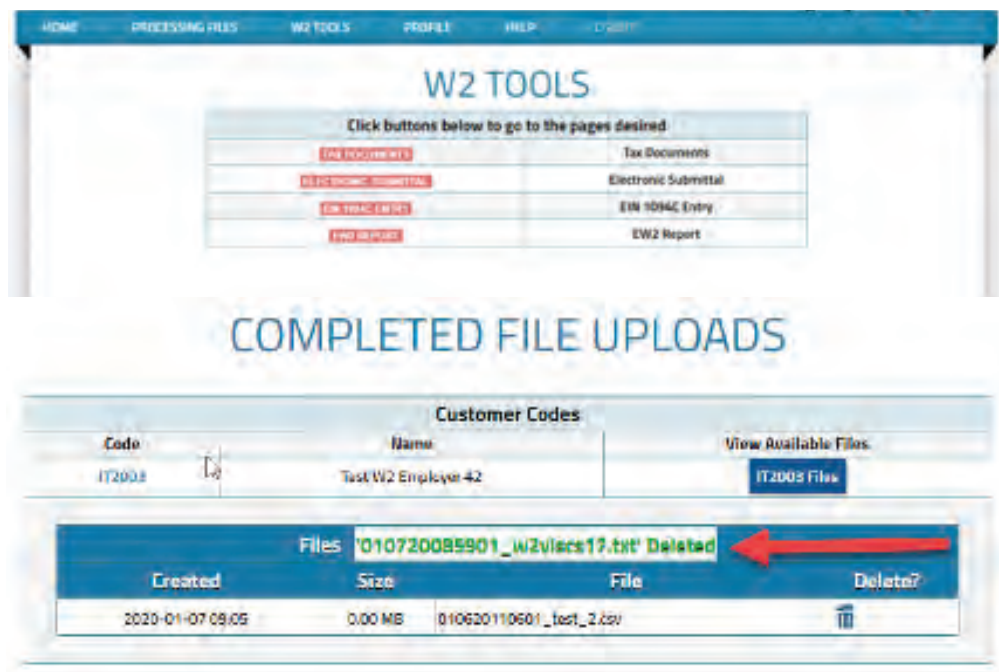


FED FILING DASHBOARD

ELECTRONIC W2, 1099, AND/OR 1095 FEDERAL FILING SUBMISSION VERIFICATION

1. Login to www.W2copy.com with your company code and secure password.
 - ▼ Navigate to W2 Tools > Electronic Submittal for W2s or 1099s
 - ▼ Navigate to W2 Tools > 1095 Submission for 1095s



2. Each code with uploaded files will show on the list along with corresponding EIN and the status of the submission.

IF THERE ARE ANY FEINS MISSING FROM THE LIST, PLEASE CONTACT US IMMEDIATELY.

You can also download a copy of the submission of a W3 for your records by clicking on the download links. These are found on the right hand side of the screen for each EIN.

3. Once you have reviewed and verified that all EINS have been submitted, please respond to W2PROCESSING@THESOLVGROUP.COM that all EINS are complete.